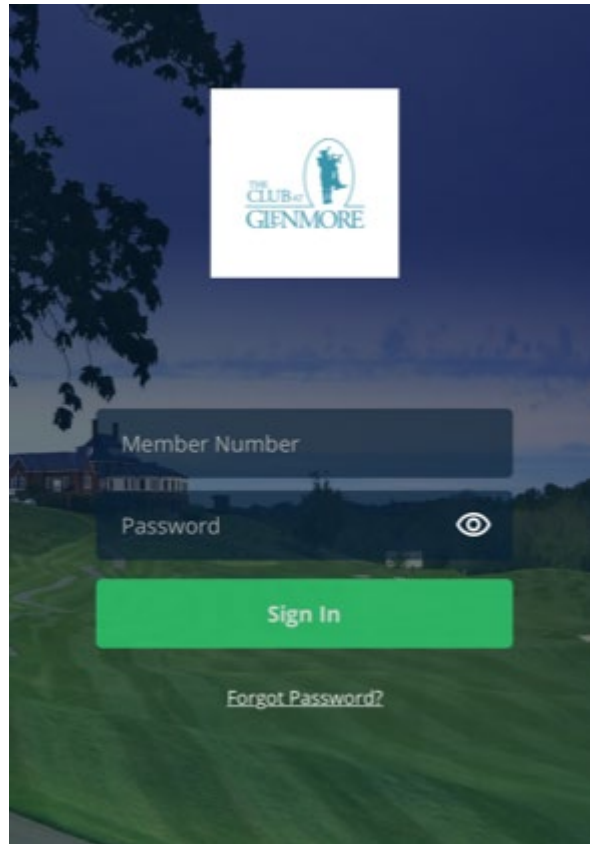
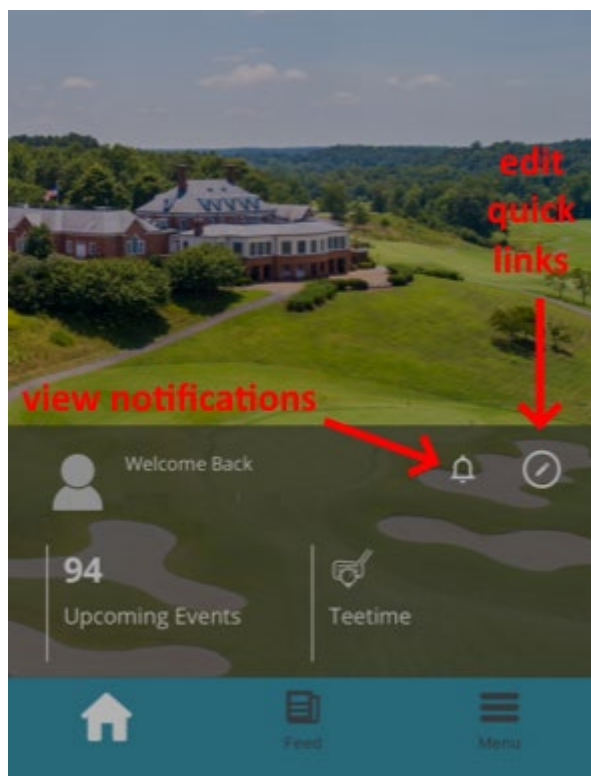


A Guide to Using the Club's App

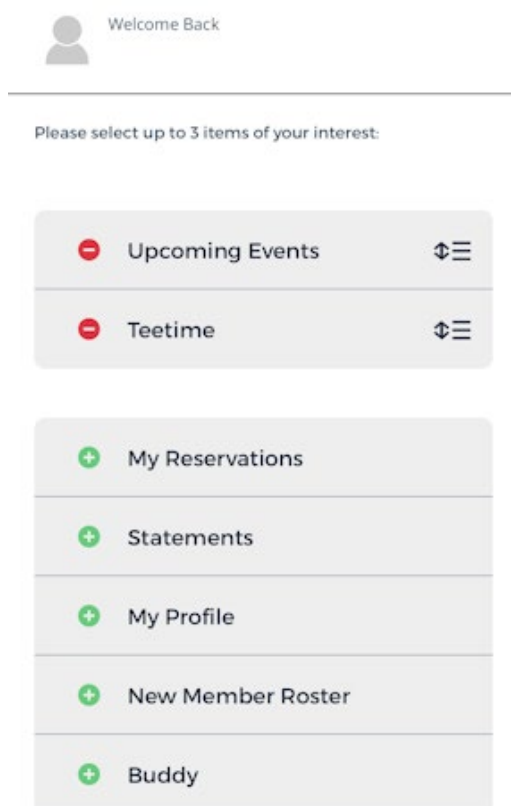
The club app is available for [iOS](#) and [Android](#). The first time you open the app, you'll need to enter your member number and the password you set for the new web-based member portal. If you have yet to [log in](#) to the web-based portal, you'll need to do so before you can use the app. The first time you log in to the app, you might also need to enter "Glenmore" as the Club ID.



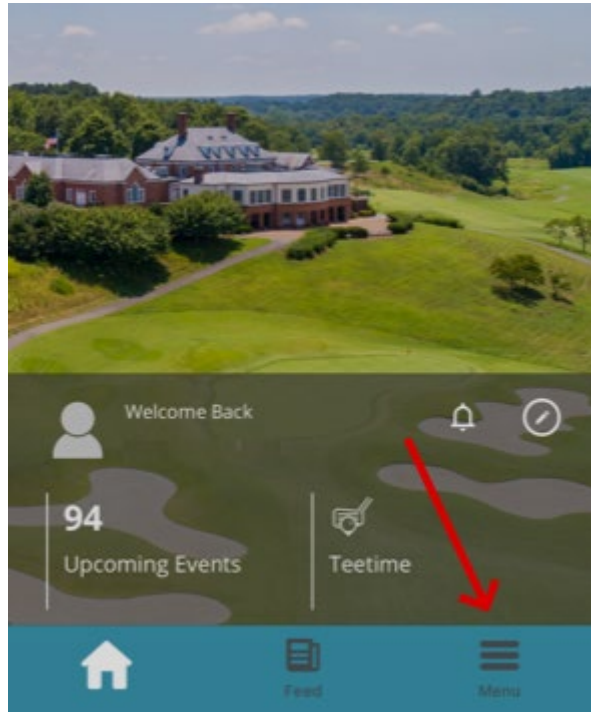
The default home screen has two quick links, “Upcoming Events,” and “Tee Times.” You can edit which quick links are displayed by clicking the edit icon. Notifications are displayed by clicking on the bell icon.



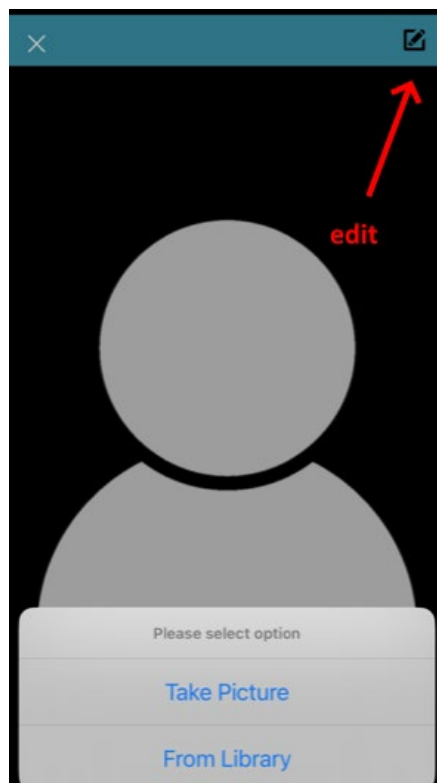
If you'd like to change the default quick links, you can select up to three quick links to display on your home screen. The default two can be removed by clicking on the red minus symbols, new ones added with the green plus symbols.



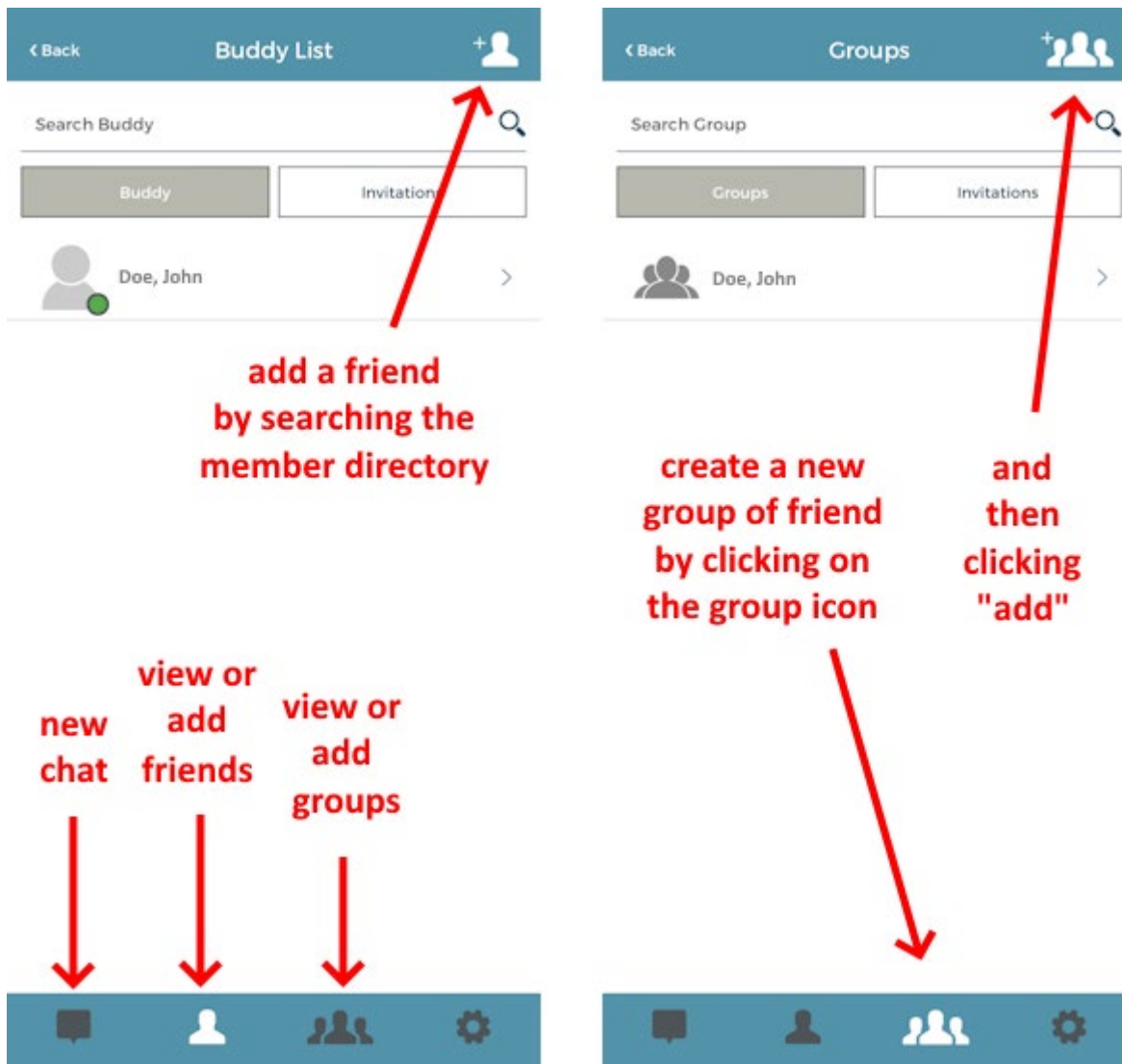
Expanding the main navigation menu:



brings up links to existing functionalities such as statement, tee times, and dining info. New is the member directory. If you'd like to opt-out of sharing some or all of your personal information in the member directory you can do so in the web portal by following instructions [here](#). Your profile can be edited directly in the app, but your sharing settings need to be changed in the [web-based portal](#). One fun new app functionality: if you'd like to add a picture to your member profile, you can use the app to take a selfie (or add a picture from your phone's library). Click on your picture—or the blank placeholder image—then click on edit:



Also new in the app is the “buddy” feature. Click on “buddy” from the main navigation menu, then you can add individual friends, create groups of friends, and chat in the app either individually or as groups:



When you add buddies in the app, they’ll also appear in the web-based portal, for example when booking tee times:

The Club at Glenmore 05/24/2024 1 2 3 4 Use Last Play

Player Information

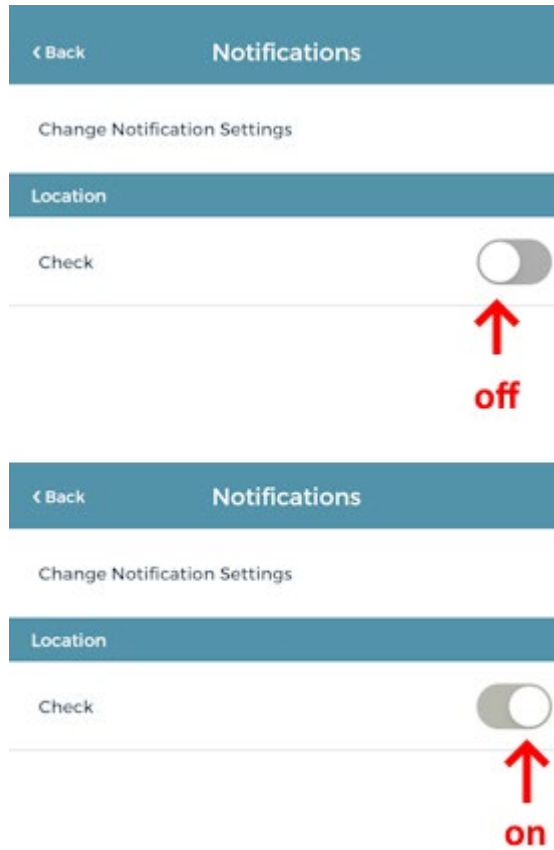
Reservation at 06:00 PM , Tee Off on hole # 1

	Name	Transportation	9 Holes
✕ 🏠	Doe, John * Member	Cart	<input type="checkbox"/>
✕ 🏠	+ Member + Guest + TBD	Cart	<input type="checkbox"/>
✕ 🏠	+ Member + Guest + TBD	Cart	<input type="checkbox"/>
✕ 🏠	+ Member + Guest + TBD	Cart	<input type="checkbox"/>

Invite / Select Buddies

Doe, Jane ✕

When editing app settings, if a slider is to the left that means off, a slider to the right mean on:



This bug should be fixed soon, with the sliders being colored for on, grey for off, as one would expect.